

Gold Sponsor



Supported by the Saddlers' Company



Gold Sponsor



Supported by the Loriners' Company

The BETA Bits, Bridling & Saddlery Conference 2025

Loughborough University (Holywell Park)

Day 1

Lorinery - Horse bits and bridling

Making Equitation a BIT Better

A day for riders, equestrian professionals and all in the saddlery and lorinery trade

Lorinery Conference Programme

08.15 Registration & Refreshments. Exhibition stands open

09.25 Welcome & Opening:

Claire Williams & Tricia Nassau Williams, BETA

09.30 Ethics in Riding. How you can play your part

Prof. Madeleine Campbell,
University of Nottingham

10.00 The Horse's Mouth – the inside story

Grant Chanter, Equine Dental Technician

10.30 Bitting from the inside out

Gillian Higgins, *Horses Inside Out*
Bridle lameness, bit & bridle traumas and
avoiding them

11.00 Morning Break

11.30 Bridles – Double and anatomical - Current research

Diana Fisher, The Society of Master Saddlers

12.00 Double Trouble – the great debate,

Richard Davison

12.30 Lunch - Exhibition stands open

13.30 Talking Horse – Horse to Human Communication

Olivia Turner, Olivia Turner, Equine
Behaviourist and Bitting Specialist

14.00 Navigating Social Media in a Changing World

Rhea Freeman, PR Adviser and business coach

14:30 A Day in the life of a Bit Fitter :
experiences and challenges

Charlotte Warman, Bitting Solutions
Kings Sedgemoor Equestrian Centre

15.00 Afternoon Break (30min)

15.30 Bitless bridles

Diana Fisher, The Society of Master Saddlers

16.00 Nosebands and the use of the Gauge –
practical experience

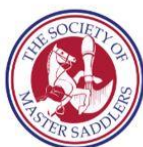
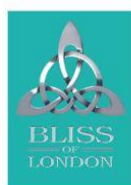
Dr. Victoria Lewis, Senior Lecturer
Hartpury University, FEI Level 3 Steward

16.15 Discussion Panel / Q & A (30 min)

16.45 Conference Concludes

17.30 Exhibition Stands Close

Silver sponsors:



Bronze sponsor: Book your ticket:



Gold Sponsor



Supported by the Saddlers' Company



Gold Sponsor



Supported by the Loriners' Company

The BETA Bits, Bridling & Saddlery Conference 2025

Day 2

Saddlery – saddles and saddle fitting

Helping Equitation to SIT Better

Saddlery Conference Programme

08.15 Registration & Refreshments. Exhibition stands open

09.25 Welcome & Opening:

Claire Williams & Tricia Nassau Williams, BETA

09.30 Welfare within Riding – Our role in influencing change

World Horse Welfare

10.00 Saddling from the inside out - the horse's back.

Gillian Higgins

10:30 The great weight debate –
How to deal with the challenges in obesity in horses.

Dr. Tamzin Furtado, BA(hons) PhD Liverpool University

11.00 Morning Break (30 min)

11.30 New Saddlery Research –
The past, the present and the future

Prof. Jane Williams, Hartpury University

12.00 Saddle fitting – an Art or a Science

Dr. Jan Birch, British Horse Foundation

12.30 Lunch - Exhibition stands open

13.30 Horse and Rider fit problems:
A manufacturers perspective

Nikki Newcombe, Bliss of London

14.00 Ten top tips for Saddle fitting
Changes in fitting practice

Mark Fisher, The Society of Master Saddlers

14:30 Afternoon break

15.00 Holding it together – Girth development and research.

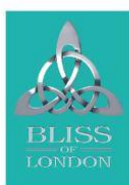
Hillary Clayton

15.30 Discussion Panel / Q & A (30min)

16.00 Conference Concludes

17.30 Exhibition Stands Close

Silver sponsors:



SPRENGER
DISTRIBUTED BY:



Bronze sponsor: Book your ticket:

